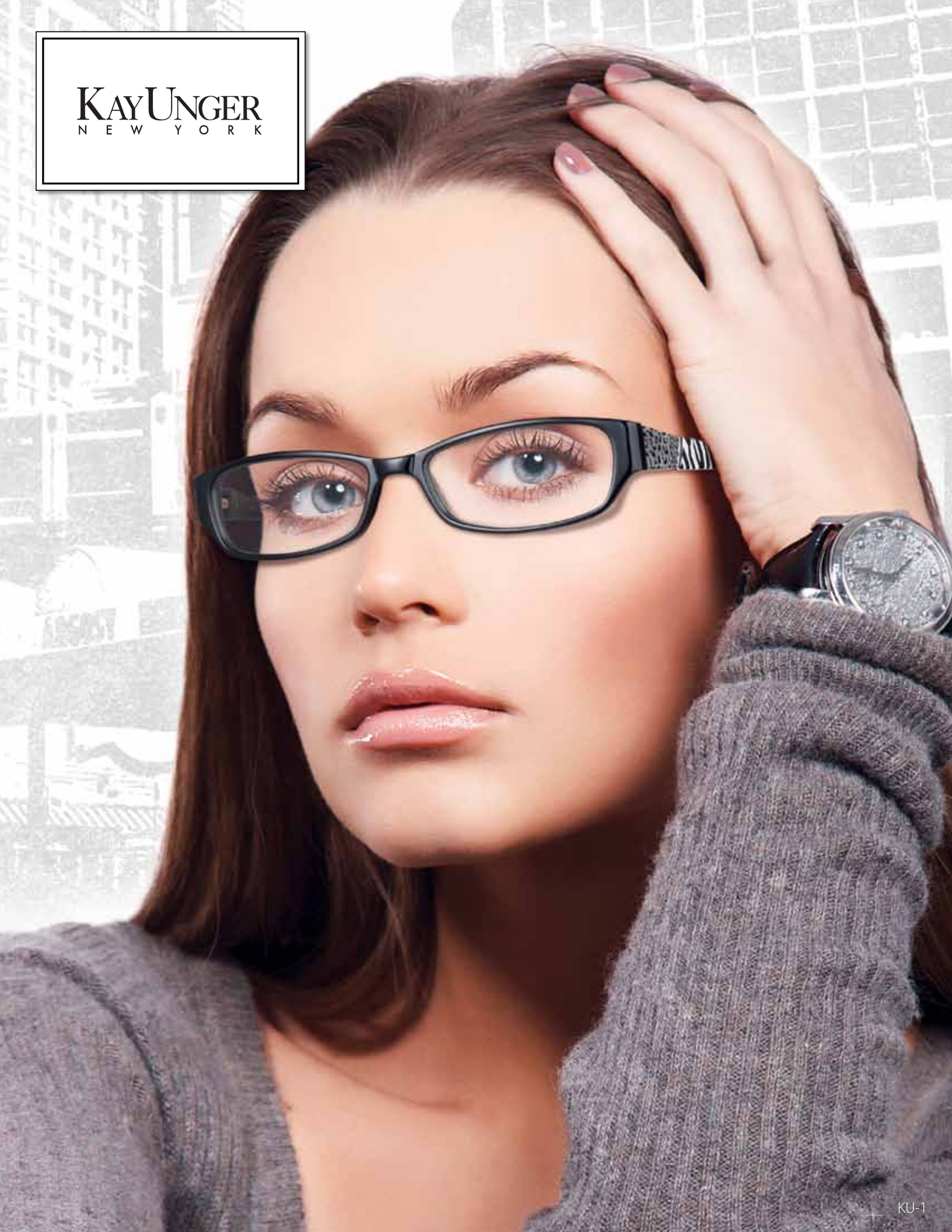


KAY UNGER
NEW YORK





Kay Unger's feminine designs are best known for their ability to both flatter and fit. Radiating the same glamour and cutting-edge design seen in her fashion collections, Kay's eyewear is inspired by couture fabrics and feminine styling. Blending exquisite materials and chic design, this collection is for trendsetters with a discerning taste.

- Created for the confident woman who appreciates classic elegance
- Colors, textures and dramatic details are inspired by Kay's own designs
- Charming accents make each frame a work of art

KAY UNGER NEW YORK



K102



53-17-130

BRN – Brown/Mauve
PNK – Blue/Pink



K107



51-17-135 • 53-17-135

BRN – Light Brown/Brown
SIL – Satin Silver/Charcoal



K103



54-17-135

BLK – Black/Black & Gold
BRN – Brown/Brown & Gold



K108



50-17-125 • 52-17-125

BRN – Brown/Gold
ROS – Burgundy/Rose



K104



52-18-135 • 54-18-135

BRN – Brown/Gold
WIN – Wine/Platinum



K109



53-17-130 • 55-17-130

HRN – Black/Horn
TOR – Black/Tortoise



K105



52-18-135

BLK – Black
GRY – Gray/Silver
PLM – Plum/Gold



K110



52-17-135 • 54-17-135

BRN – Brown/Brown Marble
WIN – Wine/Wine Marble



K106



51-18-130 • 53-18-130

BLK – Black/Gold
BRN – Brown/Gold



K111



52-17-130 • 54-17-130

BLK – Black/Horn
BRN – Brown/Orange

KAY UNGER

NEW YORK



K112

51-16-135 • 53-16-135
GRN – Olive Green
RED – Red



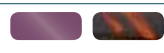
K117

50-18-130 • 52-18-130
BLK – Black
BRN – Brown



K113

51-16-135 • 53-16-135
PUR – Purple/Gunmetal
TOR – Tortoise/Light Satin Gold



K118

46-19-130 • 48-19-130
BRN – Brown
RED – Red



K114

52-17-130 • 54-17-130
BLK – Black/Gold
COP – Copper/Gold



K119

50-17-133 • 52-17-133
BLK – Black
BRN – Brown



K115

51-17-135
BLK – Black
BRN – Brown
RED – Red



K120

50-17-135
BLK – Black
BLU – Blue
RED – Red



K116

50-17-130 • 52-17-130
BLK – Black
BRN – Brown



K121

51-16-135
BLK – Black
BRN – Brown
ROS – Rose



KAY UNGER NEW YORK



K122



51-15-140
BLK – Black
BRN – Brown
RED – Red



K127



52-18-130
BLK – Black
BRN – Brown
GLD – Gold



K123



52-15-135
BLK – Black/White
BRN – Brown/Purple
RED – Red/Pink



K128



51-18-130
BLK – Satin Black
BRN – Satin Brown
PLU – Satin Plum
■



K124



53-15-135
BLK – Black/Black & White
BRN – Brown/ Brown
PNK – Pink/Pink



K129



53-17-130
BLK – Satin Black
BRN – Shiny Brown
PLU – Shiny Plum



K125



52-17-130
BLK – Black/Black
BRN – Brown/ Tortoise
GLD – Gold/Black



K130

March 2011



51-17-130
BLK – Black
BRN – Brown
RED – Red



K126

May 2011



51-18-130
BLK – Satin Black
GLD – Satin Gold



K131

March 2011



52-17-135
BLK – Satin Black
BRN – Satin Brown
SIL – Shiny Silver
■

KAY UNGER

NEW YORK



K132

March 2011



51-17-130

BLK – Black
BRN – Brown
BUR – Burgundy
■



K133

May 2011



50-17-135

BLK – Black
BRN – Brown
TOR – Tortoise